



# Moosehead

## CEDAR LOG HOMES

*Moosehead Cedar Log Homes: Authentic Maine Craftsmanship, One Cedar Log at a Time.*



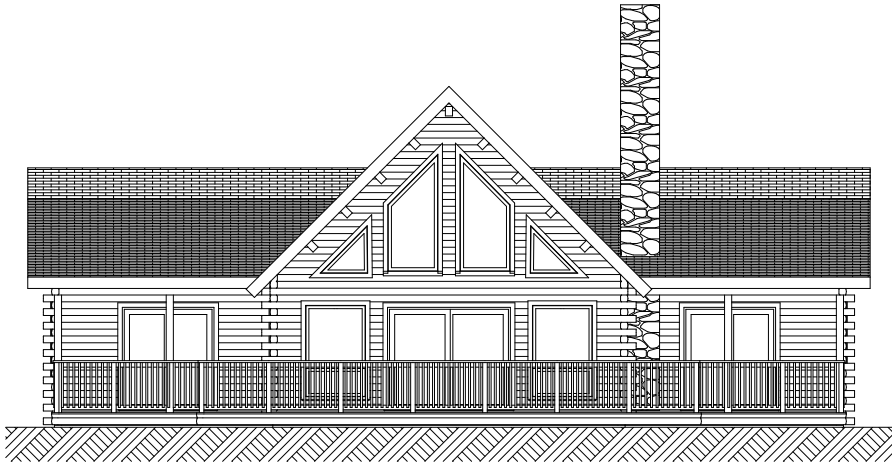
*The Stonington*

*Building Size - 50'X34'   Square Feet - 1662   Roof Structure - Combo   Bedrooms - 2   Bathrooms - 2*

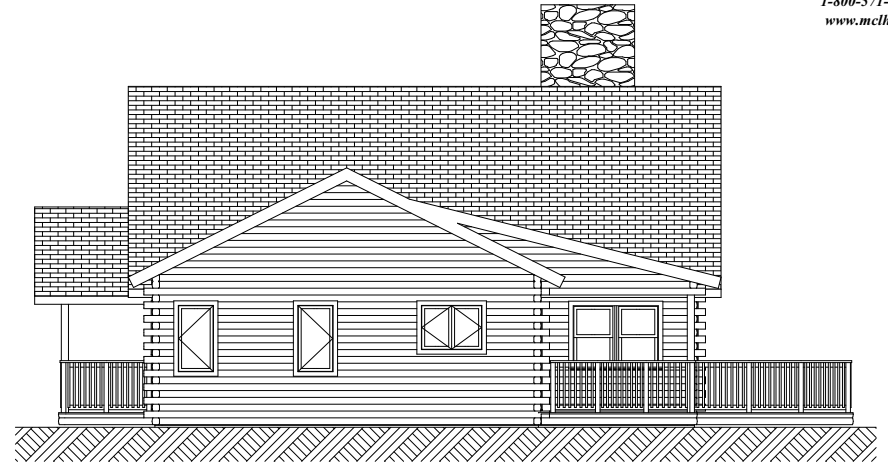


**Moosehead**  
CEDAR LOG HOMES

1-800-571-3296  
[www.mclh.net](http://www.mclh.net)



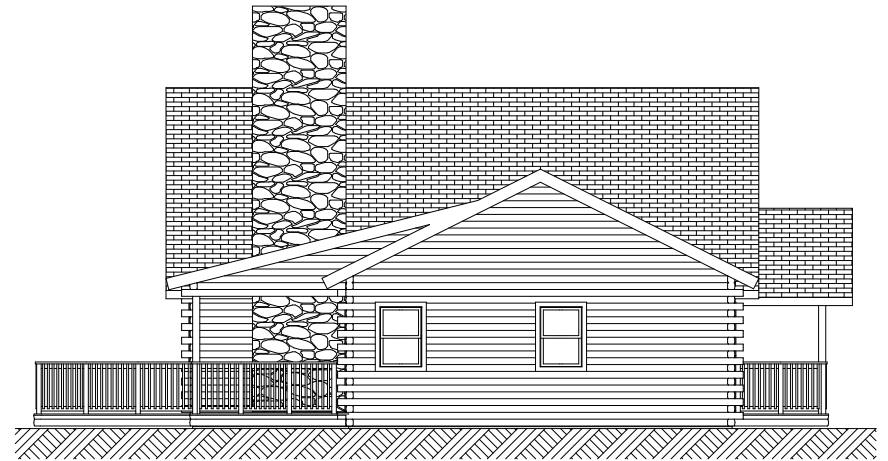
Front



Left



Rear



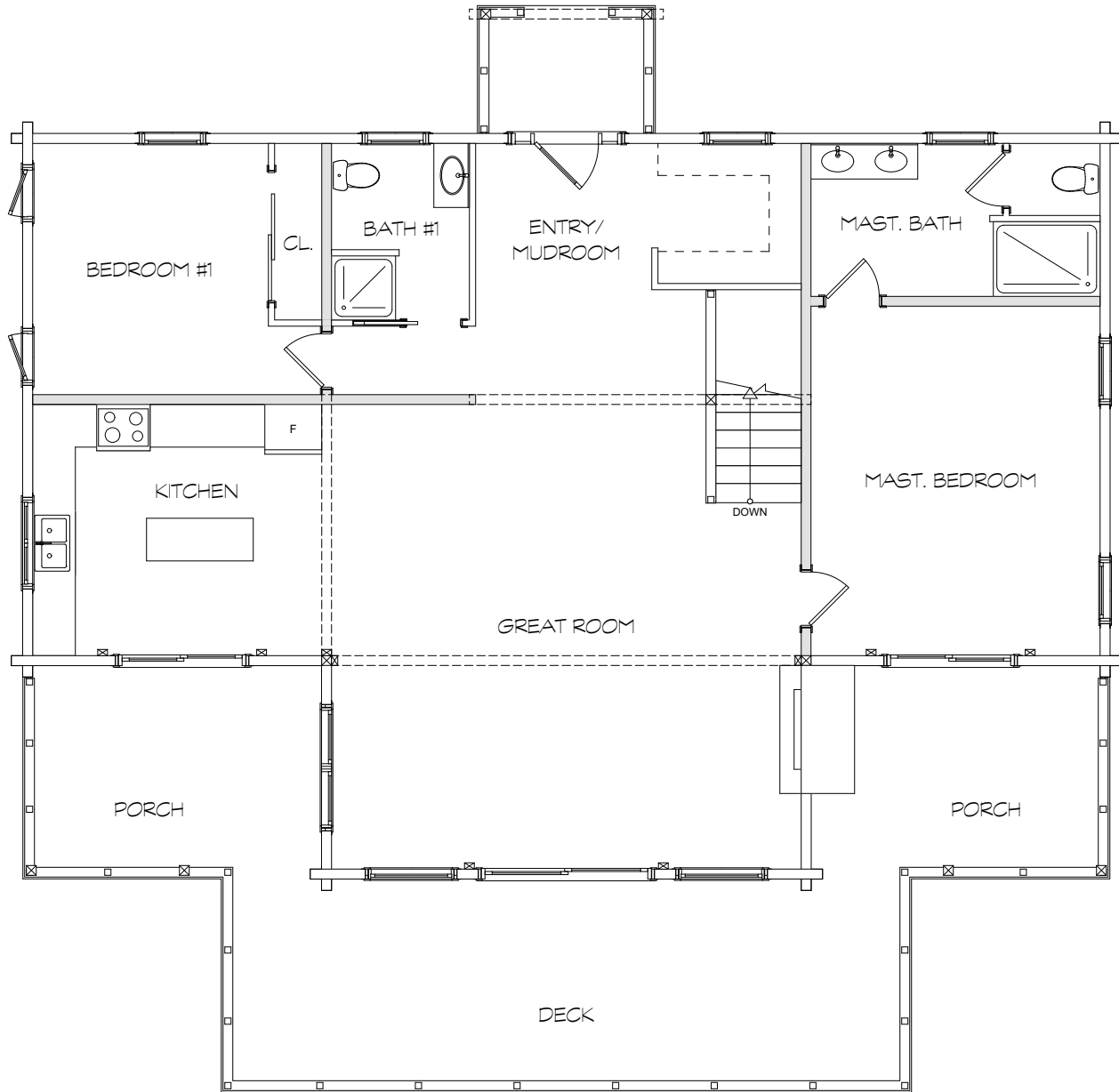
Right

*The Stonington*



**Moosehead**  
CEDAR LOG HOMES

1-800-571-3296  
www.mclh.net



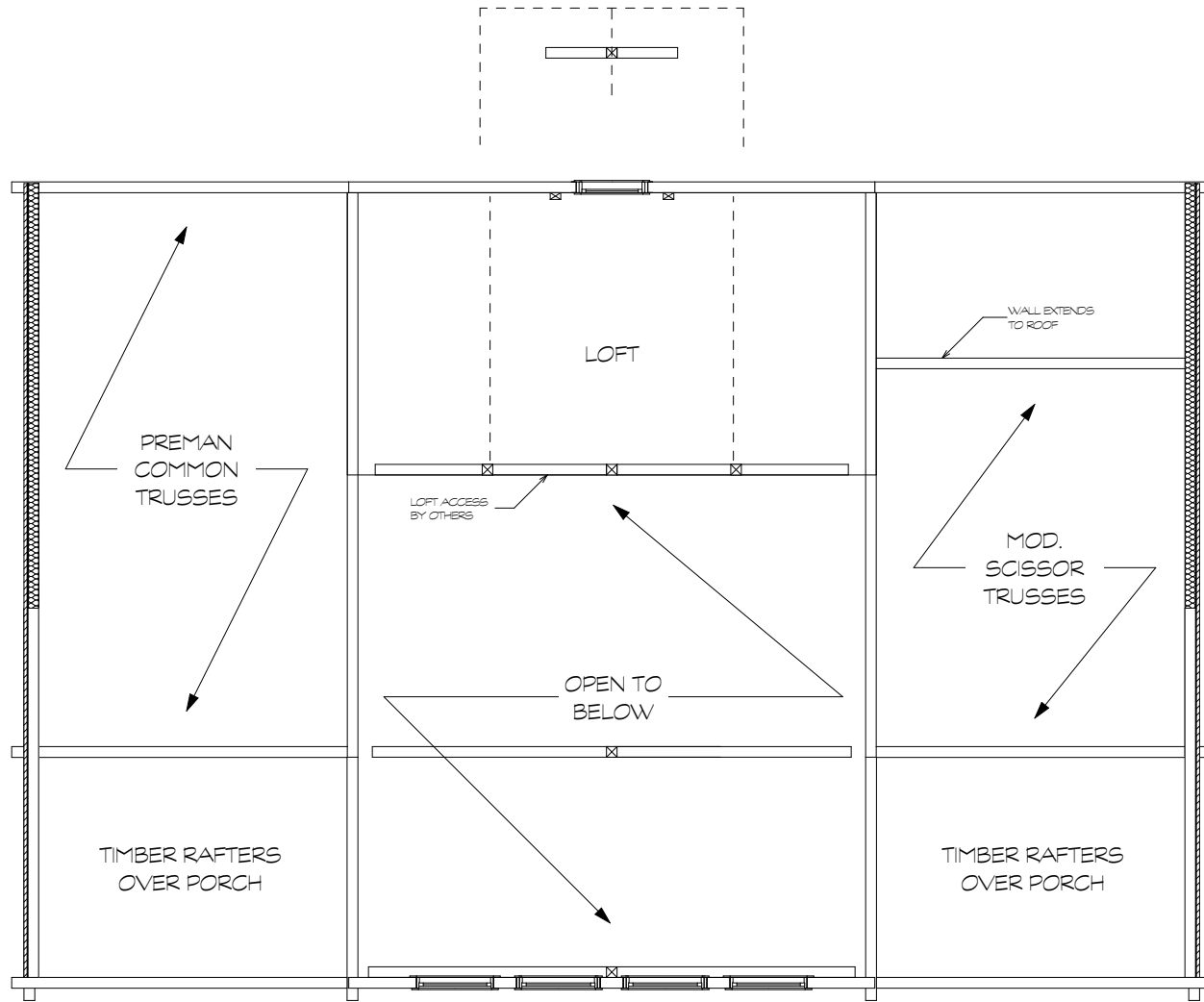
First Floor

*The Stonington*



**Moosehead**  
CEDAR LOG HOMES

1-800-571-3296  
www.mclh.net



Second Floor

*The Stonington*